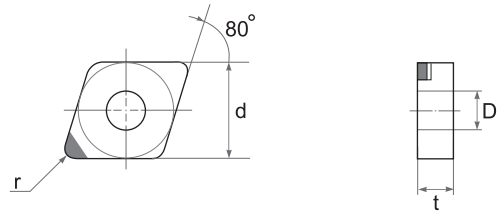
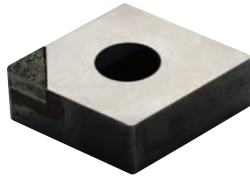




PCBN.PCD Insert

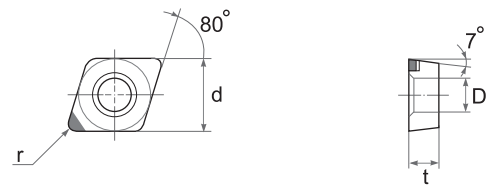
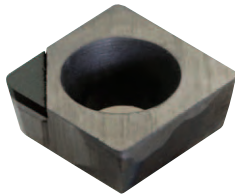
P CBN	A100
P CD	A109
S pecial	A116

CNGA



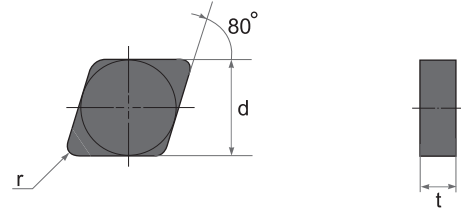
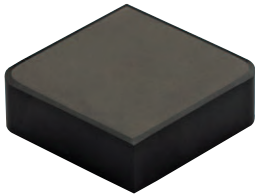
Type		Dimensions (mm)				PCBN	
ISO	ASA	d	t	r	D	SBN1000	SBN2000
CNGA 120402	CNGA 4302	12.70	4.76	0.2	5.16	●	●
CNGA 120404	CNGA 431	12.70	4.76	0.4	5.16	●	●
CNGA 120408	CNGA 432	12.70	4.76	0.8	5.16	●	●
CNGA 120412	CNGA 433	12.70	4.76	1.2	5.16	●	●

CCMW



Type		Dimensions (mm)				PCBN	
ISO		d	t	r	D	SBN1000	SBN2000
CCMW 060202		6.35	2.38	0.2	2.8	●	●
CCMW 060204		6.35	2.38	0.4	2.8	●	●
CCMW 060208		6.35	2.38	0.8	2.8	●	●
CCMW 09T302		9.52	3.97	0.2	4.4	●	●
CCMW 09T304		9.52	3.97	0.4	4.4	●	●
CCMW 09T308		9.52	3.97	0.8	4.4	●	●
CCMW 120404		12.70	4.76	0.4	5.5	●	●
CCMW 120408		12.70	4.76	0.8	5.5	●	●
CCMW 120412		12.70	4.76	1.2	5.5	●	●

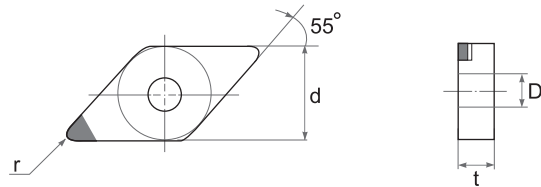
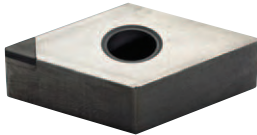
CNMN (Solid)



Turning & Milling

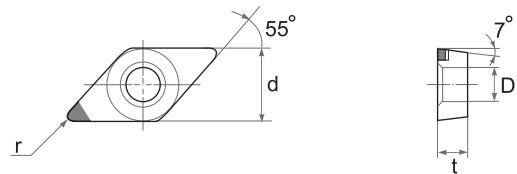
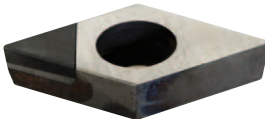
Type	Dimensions (mm)			PCBN	
	d	t	r	SBN1000	SBN2000
ISO					
CNMN 120408	12.70	4.76	0.8	•	
CNMN 120412	12.70	4.76	1.2		

DNGA



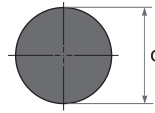
Type		Dimensions (mm)				PCBN	
ISO	ASA	d	t	r	D	SBN1000	SBN2000
DNGA 150402	DNGA 4302	12.70	4.76	0.2	5.16	●	●
DNGA 150404	DNGA 431	12.70	4.76	0.4	5.16	●	●
DNGA 150408	DNGA 432	12.70	4.76	0.8	5.16	●	●
DNGA 150412	DNGA 433	12.70	4.76	1.2	5.16	●	●
DNGA 150602	DNGA 4402	12.70	6.35	0.2	5.16	●	●
DNGA 150604	DNGA 441	12.70	6.35	0.4	5.16	●	●
DNGA 150608	DNGA 442	12.70	6.35	0.8	5.16	●	●
DNGA 150612	DNGA 443	12.70	6.35	1.2	5.16	●	●

DCMW



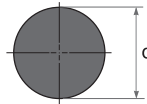
Type		Dimensions (mm)				PCBN	
ISO		d	t	r	D	SBN1000	SBN2000
DCMW 070202		6.35	2.38	0.2	2.8	●	●
DCMW 070204		6.35	2.38	0.4	2.8	●	●
DCMW 070208		6.35	2.38	0.8	2.8	●	●
DCMW 11T302		9.52	3.97	0.2	4.4	●	●
DCMW 11T304		9.52	3.97	0.4	4.4	●	●
DCMW 11T308		9.52	3.97	0.8	4.4	●	●

RNMN (Solid)



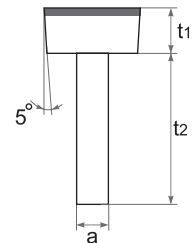
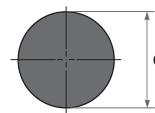
Type		Dimensions (mm)		PCBN	
ISO		d	t	SBN1000	SBN2000
RNMN 090300		9.52	3.18		
RNMN 120300		12.70	3.18	•	

RNGN (Full Face)



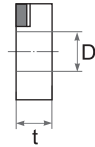
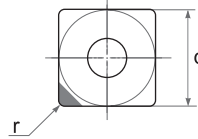
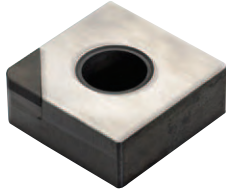
Type		Dimensions (mm)		PCBN	
ISO	ASA	d	t	SBN1000	SBN2000
RNGN 090300	RNGN 320	9.52	3.18		
RNGN 120400	RNGN 430	12.70	4.76	•	

RCGX (Full Face)



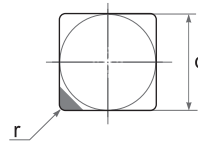
Type		Dimensions (mm)				PCBN	
ISO		d	t1	t2	a	SBN1000	SBN2000
RCGX 060D		6.35	5.00	8.35	3.00	•	
RCGX 090D		9.52	6.00	20.00	4.00	•	
RCGX 120D		12.70	6.00	20.00	5.88	•	

SNGA



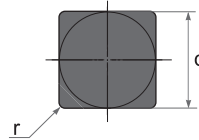
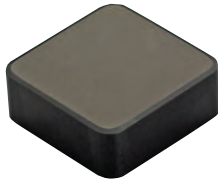
Type		Dimensions (mm)				PCBN	
ISO	ASA	d	t	r	D	SBN1000	SBN2000
SNGA 120402	SNGA 4302	12.70	4.76	0.2	5.16	●	●
SNGA 120404	SNGA 431	12.70	4.76	0.4	5.16	●	●
SNGA 120408	SNGA 432	12.70	4.76	0.8	5.16	●	●
SNGA 120412	SNGA 433	12.70	4.76	1.2	5.16	●	●

SNGN



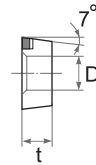
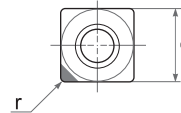
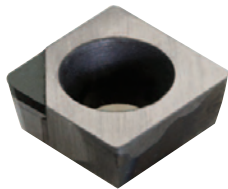
Type		Dimensions (mm)			PCBN	
ISO	ISO	d	t	r	SBN1000	SBN2000
SNGN 120402	SNGN 4302	12.70	4.76	0.2	●	●
SNGN 120404	SNGN 431	12.70	4.76	0.4	●	●
SNGN 120408	SNGN 432	12.70	4.76	0.8	●	●
SNGN 120412	SNGN 433	12.70	4.76	1.2	●	●

SNMN (Solid)



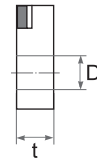
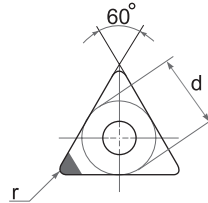
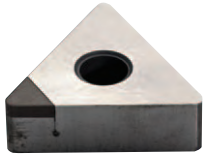
Type	Dimensions (mm)			PCBN	
	d	t	r	SBN1000	SBN2000
ISO					
SNMN 120312	12.70	3.18	1.2	●	
SNMN 120316	12.70	3.18	1.6		

SCMW



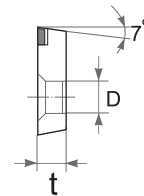
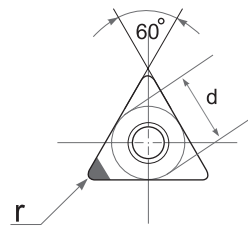
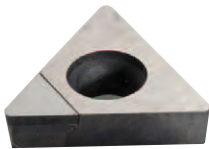
Type	Dimensions (mm)				PCBN	
	d	t	r	D	SBN1000	SBN2000
ISO						
SCMW 09T302	9.52	3.97	0.2	4.4	●	●
SCMW 09T304	9.52	3.97	0.4	4.4	●	●
SCMW 09T308	9.52	3.97	0.8	4.4	●	●
SCMW 120402	12.70	4.76	0.2	5.5	●	●
SCMW 120404	12.70	4.76	0.4	5.5	●	●
SCMW 120408	12.70	4.76	0.8	5.5	●	●

TNGA



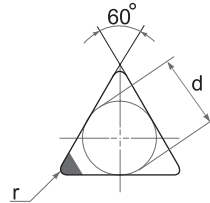
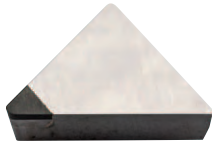
Type		Dimensions (mm)				PCBN	
ISO	ASA	d	t	r	D	SBN1000	SBN2000
TNGA 160402	TNGA 3302	9.52	4.76	0.2	4.40	●	●
TNGA 160404	TNGA 331	9.52	4.76	0.4	4.40	●	●
TNGA 160408	TNGA 332	9.52	4.76	0.8	4.40	●	●

TCMW



Type		Dimensions (mm)				PCBN	
ISO		d	t	r	D	SBN1000	SBN2000
TCMW 090202		5.56	2.38	0.2	2.5	●	●
TCMW 090204		5.56	2.38	0.4	2.5	●	●
TCMW 090208		5.56	2.38	0.8	2.5	●	●
TCMW 110202		6.35	2.38	0.2	2.8	●	●
TCMW 110204		6.35	2.38	0.4	2.8	●	●
TCMW 110208		6.35	2.38	0.8	2.8	●	●
TCMW 16T302		9.52	3.97	0.2	4.4	●	●
TCMW 16T304		9.52	3.97	0.4	4.4	●	●
TCMW 16T308		9.52	3.97	0.8	4.4	●	●

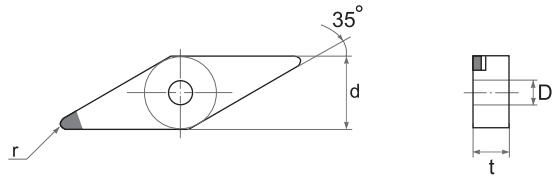
TPGN



Turning & Milling

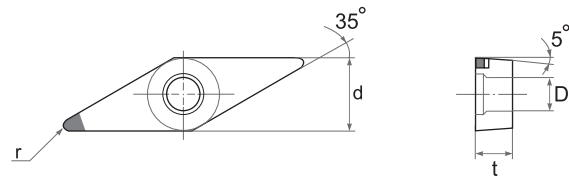
Type		Dimensions (mm)			PCBN	
ISO	ASA	d	t	r	SBN1000	SBN2000
TPGN 110302	TPGN 2202	6.35	3.18	0.2	●	●
TPGN 110304	TPGN 221	6.35	3.18	0.4	●	●
TPGN 110308	TPGN 222	6.35	3.18	0.8	●	●
TPGN 160302	TPGN 3202	9.52	3.18	0.2	●	●
TPGN 160304	TPGN 321	9.52	3.18	0.4	●	●
TPGN 160308	TPGN 322	9.52	3.18	0.8	●	●

VNGA



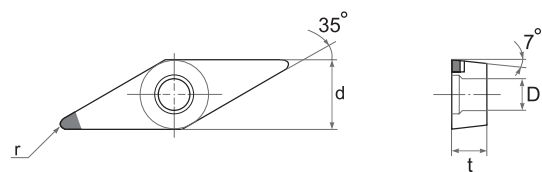
Type		Dimensions (mm)				PCBN	
ISO	ASA	d	t	r	D	SBN1000	SBN2000
VNGA 160402	VNGA 3302	9.52	4.76	0.2	3.18	●	●
VNGA 160404	VNGA 331	9.52	4.76	0.4	3.18	●	●
VNGA 160408	VNGA 332	9.52	4.76	0.8	3.18	●	●

VBMW



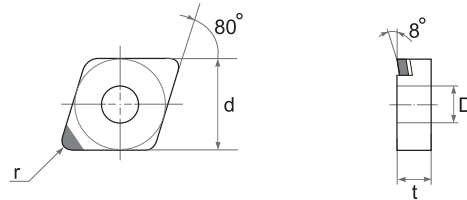
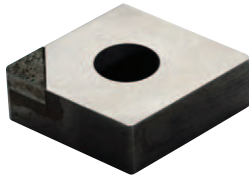
Type		Dimensions (mm)				PCBN	
ISO	ASA	d	t	r	D	SBN1000	SBN2000
VBMW 160402	VBMW 3302	9.52	4.76	0.2	4.40	●	●
VBMW 160404	VBMW 331	9.52	4.76	0.4	4.40	●	●
VBMW 160408	VBMW 332	9.52	4.76	0.8	4.40	●	●

VCGW



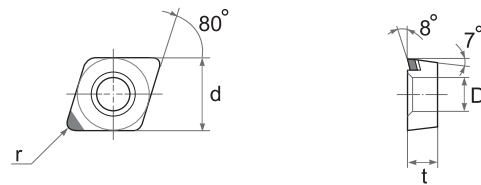
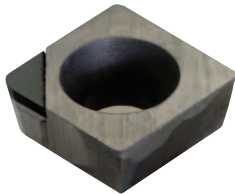
Type		Dimensions (mm)				PCBN	
ISO	ASA	d	t	r	D	SBN1000	SBN2000
VCGW 160402	VCGW 3302	9.52	4.76	0.2	4.40	●	●
VCGW 160404	VCGW 331	9.52	4.76	0.4	4.40	●	●
VCGW 160408	VCGW 332	9.52	4.76	0.8	4.40	●	●

CNGA



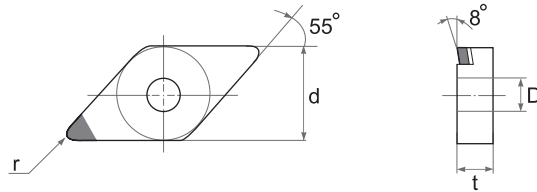
Type		Dimensions (mm)				PCD		
ISO	ASA	d	t	r	D	SPD1000	SPD2000	SPD3000
CNGA 120402	CNGA 4302	12.70	4.76	0.2	5.16	●	●	●
CNGA 120404	CNGA 431	12.70	4.76	0.4	5.16	●	●	●
CNGA 120408	CNGA 432	12.70	4.76	0.8	5.16	●	●	●
CNGA 120412	CNGA 433	12.70	4.76	1.2	5.16	●	●	●

CCMW



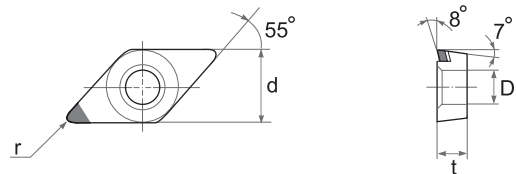
Type		Dimensions (mm)				PCD		
ISO		d	t	r	D	SPD1000	SPD2000	SPD3000
CCMW 060202		6.35	2.38	0.2	2.8	●	●	●
CCMW 060204		6.35	2.38	0.4	2.8	●	●	●
CCMW 060208		6.35	2.38	0.8	2.8	●	●	●
CCMW 09T302		9.52	3.97	0.2	4.4	●	●	●
CCMW 09T304		9.52	3.97	0.4	4.4	●	●	●
CCMW 09T308		9.52	3.97	0.8	4.4	●	●	●
CCMW 120404		12.70	4.76	0.4	5.5	●	●	●
CCMW 120408		12.70	4.76	0.8	5.5	●	●	●
CCMW 120412		12.70	4.76	1.2	5.5	●	●	●

DNGA



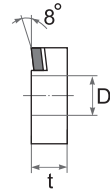
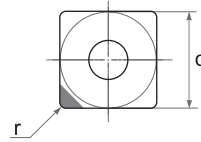
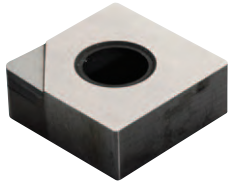
Type		Dimensions (mm)				PCD		
ISO	ASA	d	t	r	D	SPD1000	SPD2000	SPD3000
DNGA 150402	DNGA 4302	12.70	4.76	0.2	5.16	●	●	●
DNGA 150404	DNGA 431	12.70	4.76	0.4	5.16	●	●	●
DNGA 150408	DNGA 432	12.70	4.76	0.8	5.16	●	●	●
DNGA 150412	DNGA 433	12.70	4.76	1.2	5.16	●	●	●
DNGA 150602	DNGA 4402	12.70	6.35	0.2	5.16	●	●	●
DNGA 150604	DNGA 441	12.70	6.35	0.4	5.16	●	●	●
DNGA 150608	DNGA 442	12.70	6.35	0.8	5.16	●	●	●
DNGA 150612	DNGA 443	12.70	6.35	1.2	5.16	●	●	●

DCMW



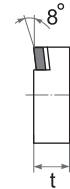
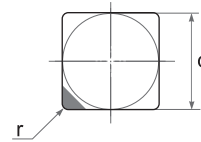
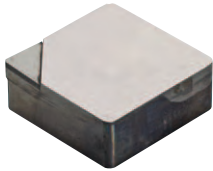
Type	Dimensions (mm)				PCD		
ISO	d	t	r	D	SPD1000	SPD2000	SPD3000
DCMW 070202	6.35	2.38	0.2	2.8	●	●	●
DCMW 070204	6.35	2.38	0.4	2.8	●	●	●
DCMW 070208	6.35	2.38	0.8	2.8	●	●	●
DCMW 11T302	9.52	3.97	0.2	4.4	●	●	●
DCMW 11T304	9.52	3.97	0.4	4.4	●	●	●
DCMW 11T308	9.52	3.97	0.8	4.4	●	●	●

SNGA



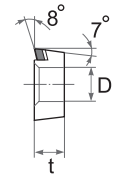
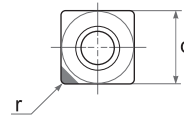
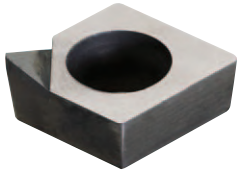
Type		Dimensions (mm)				PCD		
ISO	ASA	d	t	r	D	SPD1000	SPD2000	SPD3000
SNGA 120402	SNGA 4302	12.70	4.76	0.2	5.16			
SNGA 120404	SNGA 431	12.70	4.76	0.4	5.16			
SNGA 120408	SNGA 432	12.70	4.76	0.8	5.16			
SNGA 120412	SNGA 433	12.70	4.76	1.2	5.16			

SNGN



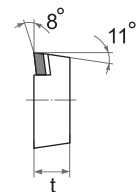
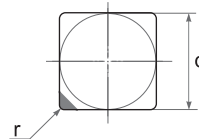
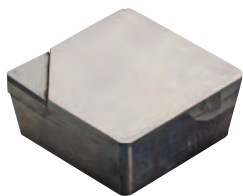
Type		Dimensions (mm)				PCD		
ISO	ASA	d	t	r	D	SPD1000	SPD2000	SPD3000
SNGA 120402	SNGA 4302	12.70	4.76	0.2				
SNGA 120404	SNGA 431	12.70	4.76	0.4				
SNGA 120408	SNGA 432	12.70	4.76	0.8				
SNGA 120412	SNGA 433	12.70	4.76	1.2				

SCMW



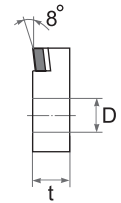
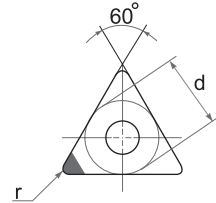
Type		Dimensions (mm)				PCD		
ISO		d	t	r	D	SPD1000	SPD2000	SPD3000
SCMW 09T302		9.52	3.97	0.2	4.4	●	●	●
SCMW 09T304		9.52	3.97	0.4	4.4	●	●	●
SCMW 09T308		9.52	3.97	0.8	4.4	●	●	●
SCMW 120402		12.70	4.76	0.2	5.5	●	●	●
SCMW 120404		12.70	4.76	0.4	5.5	●	●	●
SCMW 120408		12.70	4.76	0.8	5.5	●	●	●

SPGN



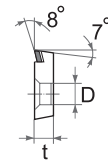
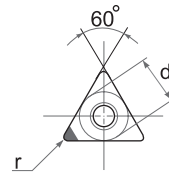
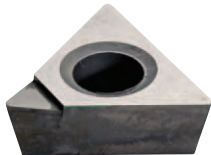
Type		Dimensions (mm)			PCD		
ISO	ASA	d	t	r	SPD1000	SPD2000	SPD3000
SPGN 090308	SPGN 322	9.52	3.18	0.8		●	
SPGN 120308	SPGN 422	12.70	3.18	0.8		●	

TNGA



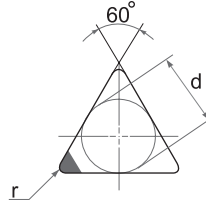
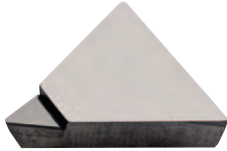
Type		Dimensions (mm)				PCD		
ISO	ASA	d	t	r	D	SPD1000	SPD2000	SPD3000
TNGA 160402	TNGA 3302	9.52	4.76	0.2	4.40			
TNGA 160404	TNGA 331	9.52	4.76	0.4	4.40			
TNGA 160408	TNGA 332	9.52	4.76	0.8	4.40			

TCMW



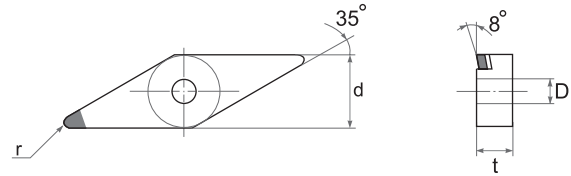
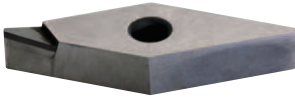
Type		Dimensions (mm)				PCD		
ISO		d	t	r	D	SPD1000	SPD2000	SPD3000
TCMW 090202		5.56	2.38	0.2	2.5			
TCMW 090204		5.56	2.38	0.4	2.5			
TCMW 090208		5.56	2.38	0.8	2.5			
TCMW 110202		6.35	2.38	0.2	2.8			
TCMW 110204		6.35	2.38	0.4	2.8			
TCMW 110208		6.35	2.38	0.8	2.8			
TCMW 16T302		9.52	3.97	0.2	4.4			
TCMW 16T304		9.52	3.97	0.4	4.4			
TCMW 16T308		9.52	3.97	0.8	4.4			

TPGN



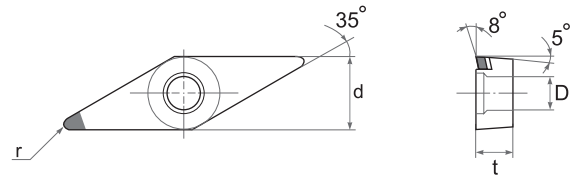
Type		Dimensions (mm)			PCD		
ISO	ASA	d	t	r	SPD1000	SPD2000	SPD3000
TPGN 110302	TPGN 2202	6.35	3.18	0.2	●	●	●
TPGN 110304	TPGN 221	6.35	3.18	0.4	●	●	●
TPGN 110308	TPGN 222	6.35	3.18	0.8	●	●	●
TPGN 160302	TPGN 3202	9.52	3.18	0.2	●	●	●
TPGN 160304	TPGN 321	9.52	3.18	0.4	●	●	●
TPGN 160308	TPGN 322	9.52	3.18	0.8	●	●	●

VNGA



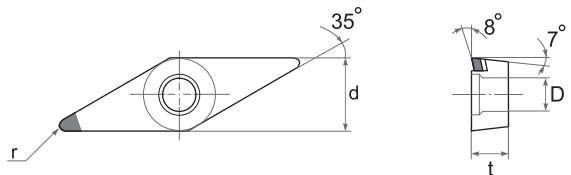
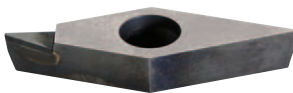
Type		Dimensions (mm)				PCD		
ISO	ASA	d	t	r	D	SPD1000	SPD2000	SPD3000
VNGA 160402	VNGA 3302	9.52	4.76	0.2	3.18	●	●	●
VNGA 160404	VNGA 331	9.52	4.76	0.4	3.18	●	●	●
VNGA 160408	VNGA 332	9.52	4.76	0.8	3.18	●	●	●

VBMW



Type		Dimensions (mm)				PCD		
ISO	ASA	d	t	r	D	SPD1000	SPD2000	SPD3000
VBMW 160402	VBMW 3302	9.52	4.76	0.2	4.40	●	●	●
VBMW 160404	VBMW 331	9.52	4.76	0.4	4.40	●	●	●
VBMW 160408	VBMW 332	9.52	4.76	0.8	4.40	●	●	●

VCGW

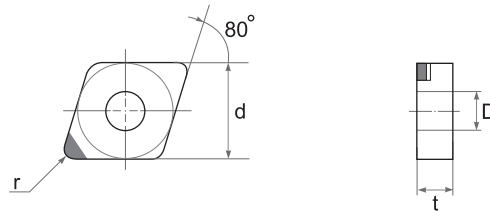
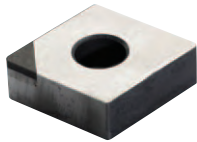


Type		Dimensions (mm)				PCD		
ISO	ASA	d	t	r	D	SPD1000	SPD2000	SPD3000
VCGW 160402	VCGW 3302	9.52	4.76	0.2	4.40	●	●	●
VCGW 160404	VCGW 331	9.52	4.76	0.4	4.40	●	●	●
VCGW 160408	VCGW 332	9.52	4.76	0.8	4.40	●	●	●
VCGW 160412	VCGW 333	9.52	4.76	1.2	4.40	●	●	●

MINI TIP

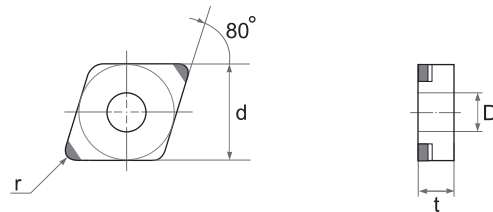
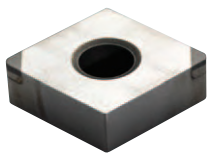
Turning & Milling

CNGA (1 Corner)



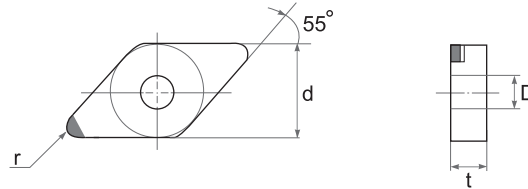
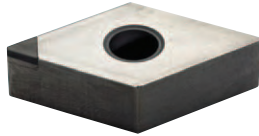
Type	Dimensions (mm)				PCBN		PCD		
	d	t	r	D	SBN1000	SBN2000	SPD1000	SPD2000	SPD3000
CNGA 120402-1C	12.70	4.76	0.2	5.16					
CNGA 120404-1C	12.70	4.76	0.4	5.16	●	●			
CNGA 120408-1C	12.70	4.76	0.8	5.16	●	●			
CNGA 120412-1C	12.70	4.76	1.2	5.16	●	●			

CNGA (2 Corner)



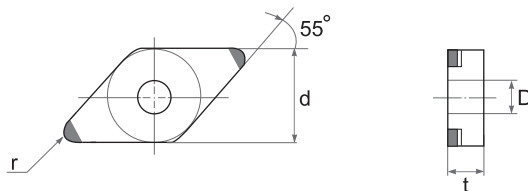
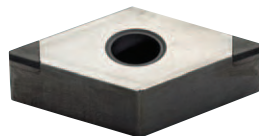
Type	Dimensions (mm)				PCBN		PCD		
	d	t	r	D	SBN1000	SBN2000	SPD1000	SPD2000	SPD3000
CNGA 120402-2C	12.70	4.76	0.2	5.16					
CNGA 120404-2C	12.70	4.76	0.4	5.16	●	●			
CNGA 120408-2C	12.70	4.76	0.8	5.16	●	●			
CNGA 120412-2C	12.70	4.76	1.2	5.16					

DNGA (1 Corner)



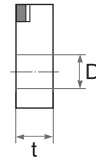
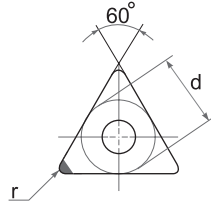
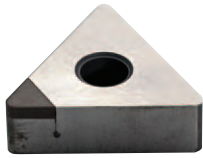
Type	Dimensions (mm)				PCBN		PCD		
	d	t	r	D	SBN1000	SBN2000	SPD1000	SPD2000	SPD3000
ISO									
DNGA 150402-1C	12.70	4.76	0.2	5.16					
DNGA 150404-1C	12.70	4.76	0.4	5.16	●	●			
DNGA 150408-1C	12.70	4.76	0.8	5.16					
DNGA 150412-1C	12.70	4.76	1.2	5.16					
DNGA 150602-1C	12.70	6.35	0.2	5.16					
DNGA 150604-1C	12.70	6.35	0.4	5.16					
DNGA 150608-1C	12.70	6.35	0.8	5.16					
DNGA 150612-1C	12.70	6.35	1.2	5.16					

DNGA (2 Corner)



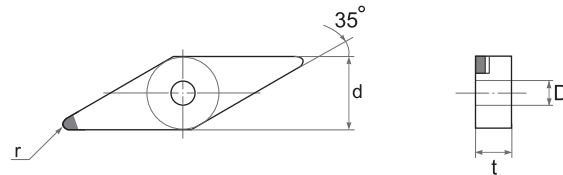
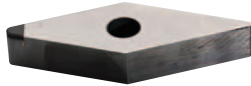
Type	Dimensions (mm)				PCBN		PCD		
	d	t	r	D	SBN1000	SBN2000	SPD1000	SPD2000	SPD3000
ISO									
DNGA 150402-2C	12.70	4.76	0.2	5.16					
DNGA 150404-2C	12.70	4.76	0.4	5.16	●	●			
DNGA 150408-2C	12.70	4.76	0.8	5.16	●	●			
DNGA 150412-2C	12.70	4.76	1.2	5.16					
DNGA 150602-2C	12.70	6.35	0.2	5.16					
DNGA 150604-2C	12.70	6.35	0.4	5.16					
DNGA 150608-2C	12.70	6.35	0.8	5.16					
DNGA 150612-2C	12.70	6.35	1.2	5.16					

TNGA (1 Corner)



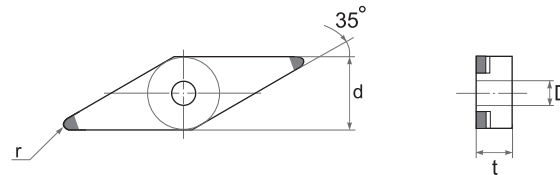
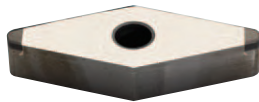
Type	Dimensions (mm)				PCBN		PCD		
	d	t	r	D	SBN1000	SBN2000	SPD1000	SPD2000	SPD3000
TNGA 160402-1C	9.52	4.76	0.2	4.40					
TNGA 160404-1C	9.52	4.76	0.4	4.40	•	•			
TNGA 160408-1C	9.52	4.76	0.8	4.40					

VNGA (1 Corner)



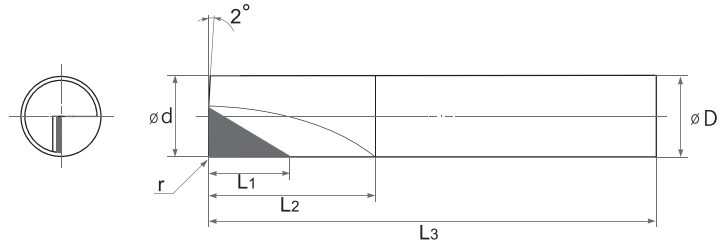
Type	Dimensions (mm)				PCBN		PCD		
	d	t	r	D	SBN1000	SBN2000	SPD1000	SPD2000	SPD3000
VNGA 160402-1C	9.52	4.76	0.2	3.18					
VNGA 160404-1C	9.52	4.76	0.4	3.18	•	•			
VNGA 160408-1C	9.52	4.76	0.8	3.18					

VNGA (2 Corner)



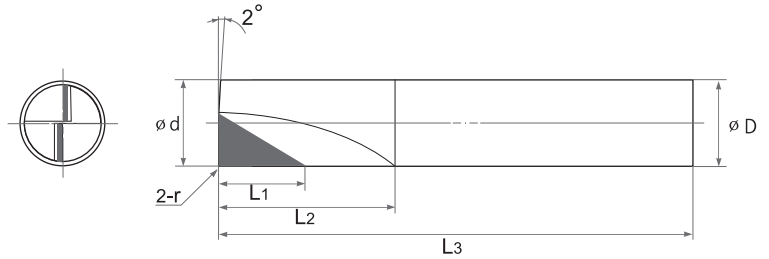
Type	Dimensions (mm)				PCBN		PCD		
	d	t	r	D	SBN1000	SBN2000	SPD1000	SPD2000	SPD3000
VNGA 160402-2C	9.52	4.76	0.2	3.18					
VNGA 160404-2C	9.52	4.76	0.4	3.18	•				
VNGA 160408-2C	9.52	4.76	0.8	3.18					

SFE ..1C



Type	Dimensions (mm)						PCBN		PCD		
ISO	d	D	L1	L2	L3	r	SBN1000	SBN2000	SPD1000	SPD2000	SPD3000
SFE 250 -1C	2.0	4.0	4.0	10.0	50.0	0.15				•	
SFE 280 -1C	2.0	4.0	4.0	10.0	80.0	0.15				•	
SFE 350 -1C	3.0	4.0	4.0	10.0	50.0	0.15				•	
SFE 380 -1C	3.0	4.0	4.0	10.0	80.0	0.15				•	
SFE 450 -1C	4.0	4.0	6.0	12.0	50.0	0.20				•	
SFE 480 -1C	4.0	4.0	6.0	12.0	80.0	0.20				•	
SFE 650 -1C	6.0	6.0	6.0	16.0	50.0	0.20				•	
SFE 6100 -1C	6.0	6.0	6.0	16.0	100.0	0.20				•	
SFE 860 -1C	8.0	8.0	7.0	16.0	60.0	0.40				•	
SFE 8120 -1C	8.0	8.0	7.0	16.0	120.0	0.40				•	
SFE 1070 -1C	10.0	10.0	7.0	16.0	70.0	0.40				•	
SFE 10120 -1C	10.0	10.0	7.0	16.0	120.0	0.40				•	

SFE .. 2C



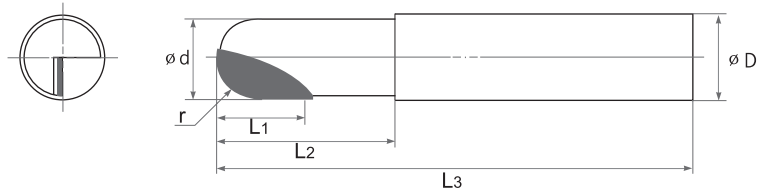
Turning & Milling

Type	Dimensions (mm)						PCBN		PCD			
	ISO	d	D	L1	L2	L3	r	SBN1000	SBN2000	SPD1000	SPD2000	SPD3000
SFE 650 -2C		6.0	6.0	4.0	12.0	50.0	0.20				●	
SFE 680 -2C		6.0	6.0	6.0	16.0	80.0	0.20				●	
SFE 860 -2C		8.0	8.0	7.0	16.0	60.0	0.20				●	
SFE 8120 -2C		8.0	8.0	9.0	20.0	120.0	0.40				●	
SFE 1070 -2C		10.0	10.0	9.0	20.0	70.0	0.40				●	
SFE 10120 -2C		10.0	10.0	12.0	25.0	120.0	0.80				●	
SFE 1270 -2C		12.0	12.0	12.0	25.0	70.0	0.80				●	
SFE 12120 -2C		12.0	12.0	16.0	30.0	120.0	1.00				●	
SFE 16100 -2C		16.0	16.0	16.0	25.0	100.0	0.80				●	
SFE 16150 -2C		16.0	16.0	20.0	30.0	150.0	1.00				●	
SFE 18100 -2C		18.0	18.0	20.0	30.0	100.0	0.80				●	
SFE 18200 -2C		18.0	18.0	24.0	35.0	200.0	1.20				●	
SFE 20100 -2C		20.0	20.0	24.0	35.0	100.0	0.80				●	
SFE 20200 -2C		20.0	20.0	28.0	40.0	200.0	1.20				●	

ENDMILL

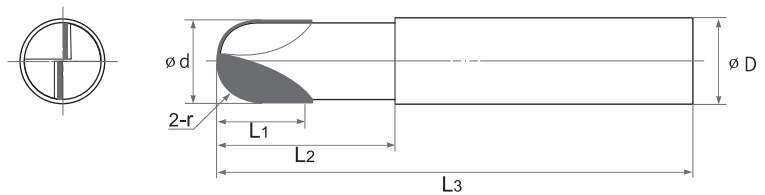
Turning & Milling

SBE .. 1C



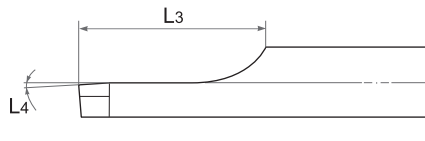
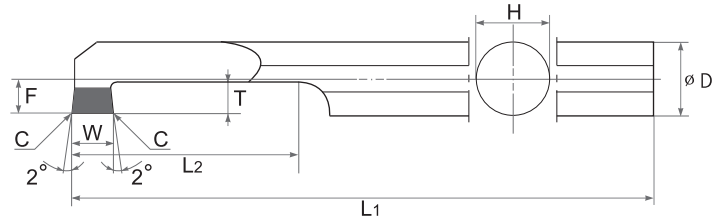
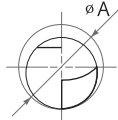
Type	Dimensions (mm)						PCBN		PCD			
	ISO	d	D	L1	L2	L3	r	SBN1000	SBN2000	SPD1000	SPD2000	SPD3000
SBE 250 -1C	2.0	4.0	4.0	12.0	50.0	1.0						
SBE 280 -1C	2.0	4.0	4.0	16.0	80.0	1.0						
SBE 350 -1C	3.0	4.0	4.0	16.0	50.0	1.5				●		
SBE 380 -1C	3.0	4.0	6.0	30.0	80.0	1.5						
SBE 450 -1C	4.0	4.0	4.0	16.0	50.0	2.0				●		
SBE 480 -1C	4.0	4.0	6.0	40.0	80.0	2.0						
SBE 650 -1C	6.0	6.0	6.0	20.0	50.0	3.0				●		
SBE 6100 -1C	6.0	6.0	8.0	50.0	100.0	3.0						
SBE 860 -1C	8.0	8.0	8.0	30.0	60.0	4.0				●		
SBE 8120 -1C	8.0	8.0	10.0	60.0	120.0	4.0						
SBE 1080 -1C	10.0	10.0	10.0	30.0	80.0	5.0				●		
SBE 10160 -1C	10.0	10.0	12.0	60.0	160.0	5.0						
SBE 12100 -1C	12.0	12.0	12.0	40.0	100.0	6.0						
SBE 12200 -1C	12.0	12.0	16.0	80.0	200.0	6.0						
SBE 16160 -1C	16.0	16.0	16.0	60.0	160.0	8.0						
SBE 16250 -1C	16.0	16.0	20.0	100.0	250.0	8.0						

SBE .. 2C



Type	Dimensions (mm)						PCBN		PCD			
	ISO	d	D	L1	L2	L3	r	SBN1000	SBN2000	SPD1000	SPD2000	SPD3000
SBE 650 -2C	6.0	6.0	6.0	20.0	50.0	3.0						
SBE 6100 -2C	6.0	6.0	8.0	50.0	100.0	3.0						
SBE 860 -2C	8.0	8.0	8.0	30.0	60.0	4.0				●		
SBE 8120 -2C	8.0	8.0	10.0	60.0	120.0	4.0						
SBE 1080 -2C	10.0	10.0	10.0	30.0	80.0	5.0				●		
SBE 10160 -2C	10.0	10.0	12.0	60.0	160.0	5.0						
SBE 12100 -2C	12.0	12.0	12.0	40.0	100.0	6.0						
SBE 12200 -2C	12.0	12.0	16.0	80.0	200.0	6.0						

PSG .. R/L



Turning & Milling

Type	Dimensions (mm)											PCBN		PCD		
ISO	ϕA	W	C	ϕD	H	L ₁	L ₂	L ₃	L ₄	F	T	SBN1000	SBN2000	SPD1000	SPD2000	SPD3000
PSG R/L 0510-60S	5.0	1.0	0.05	3.8	3.6	60	15	8.0	0.1	1.86	1.50					
PSG R/L 0520-60S	5.0	2.0	0.1	3.8	3.6	60	15	8.0	0.1	1.86	1.50				•	
PSG R/L 0610-70S	6.0	1.0	0.05	4.8	4.4	70	20	8.0	0.3	2.36	2.00					
PSG R/L 0620-70S	6.0	2.0	0.1	4.8	4.4	70	20	8.0	0.3	2.36	2.00				•	
PSG R/L 0710-70S	7.0	1.0	0.05	5.8	5.2	70	20	10.0	0.3	2.86	2.00					
PSG R/L 0720-80S	7.0	2.0	0.1	5.8	5.2	70	20	10.0	0.3	2.86	2.00				•	
PSG R/L 0810-80S	8.0	1.0	0.05	6.8	6.2	80	25	10.0	0.3	3.38	2.00					
PSG R/L 0820-80S	8.0	2.0	0.1	6.8	6.2	80	25	10.0	0.3	3.38	2.00					

*A: Minimum Processing Diameter

Turning & Milling





Turning & Milling

PCD DRILL / GUN REAMER

Turning & Milling

